



NATE

2008

February 11-14

Safety First... Safety Always • ORLANDO

Disney's Coronado Springs Resort

PRE SHOW PLANNER



Register before
January 11, 2008

and **SAVE**

\$100

per person!



*Where the
Broadcast and
Telecommunications
Tower Erection, Service
and Maintenance
Industry Meets*

Contents

Why Should You Attend	1
Chairman's Comments	1
NATE 2008 Overview	2
Event Sponsors	3
Schedule-At-A-Glance	4
Event Notices	6
Educational Sessions - Tower Hand Track	7
Educational Sessions - Management Track	10
Exposition	12
Conference & Exposition Map	13
Exhibit Hall Map	14
Exhibitors	15
Exhibitor Profile	15
Registration & Badge Information	16
NATE 2008 Headquarters	17
Ground Transportation	19
Sights and Attractions in Orlando	20
NATE 2008 "To Do" Checklist	20
Walt Disney World Resort Map	21



WHY SHOULD YOU ATTEND?



The annual NATE conference and exposition is renowned as the event specifically designed for companies and individuals involved with, or interested in, broadcast and telecommunications tower erection, service and maintenance. It is recognized as a vital forum that provides industry leaders the opportunity to interact with colleagues.

The NATE 2008 Conference & Exposition will provide those who design, engineer, construct, service and maintain communications structures the opportunity to exchange ideas and experiences, to actively participate in a variety of specially designed educational sessions, and to share the wealth of information available with peers, colleagues, technical experts and friends. Some of the numerous benefits of attending include:



- Two tracks of focused educational sessions: Tower Hand and Management;
- Hands-on access to new products and technology being showcased in the exhibit hall;
- The opportunity to network with peers, colleagues, technical experts and friends, all in one facility;
- In-depth discussions on how new technological advancements and recent standards issues will affect your project performance and implementation; and
- A tremendous opportunity to revitalize and strengthen your company's commitment to safety.

CHAIRMAN'S COMMENTS

NATE 2008 will be the largest and most widely visited conference and exhibition for the tower industry all year. Companies from all over the world will be gathering in Orlando for meetings, educational sessions and the largest industry-specific trade show.

There will be great opportunities to learn more about our exciting businesses, and attend a large number of training and educational sessions, lectures and presentations.

Professionals from companies of all sizes come to this event to meet one another and share the issues that characterize the challenges we face.

Orlando is a great place to relax, as well as enjoy all that the annual NATE event has to offer.

NATE 2008 offers those interested in joining NATE the opportunity to see the numerous and positive reasons to be a part of this effective organization.

This booklet is provided to help you prepare to make the best use of your time at NATE 2008. You will find event schedules, maps showing meeting room locations, biographies of speakers, topic outlines for educational sessions, hotel information, registration forms and much, much more.

It is my pleasure to welcome you to NATE 2008. I look forward to seeing you in Orlando! Travel safe.

Don Doty
NATE Chairman

Register before January 11, 2008 and SAVE \$100!

Register now and secure your place among top broadcast and telecommunications tower erection, service and maintenance industry leaders as they convene to discuss the latest advancements in standards, technology, products and services.

One registration fee provides attendees access to educational sessions,* exhibit hall, coffee breaks, luncheons, receptions, and many other networking opportunities throughout the four-day event.

**Does not include "registered class participants only" designated sessions.*

IMPORTANT! PLEASE READ ALL REGISTRATION INFORMATION AS THE PROCESS HAS CHANGED!

See page 16 for more information.



OVERVIEW

Educational Sessions

NATE 2008 features various educational sessions with a broad range of topics. All registered NATE 2008 attendees are welcome to attend the educational sessions with the exception of the OSHA 10-Hour Training Course, the First Aid/CPR Course, and the Climber Training Course, where you must register in advance, and be employed by a NATE member company.

Tower Hand Track (Sessions 1-3-5-7-9-11-13)

Educational Session 1

OSHA 10-Hour Training Course

Monday, February 11 • 7:30 a.m. - 5:30 p.m.

Educational Session 3

OSHA Revised Directive for Riding the Line During Construction and Maintenance Activities on Communication Structures

Tuesday, February 12 • 8:00 a.m. - 9:30 a.m.

Educational Session 5

Mobile Crane Certification and Safety

Tuesday, February 12 • 9:45 a.m. - 10:45 a.m.

Educational Session 7

RF Safety at Work Sites

Tuesday, February 12 • 11:00 a.m. - 12:00 p.m.

Educational Session 9

Installing an Effective Ground Electrode System

Wednesday, February 13 • 8:00 a.m. - 9:30 a.m.

Educational Session 11

First Aid/CPR Course

Thursday, February 14 • 8:00 a.m. - 3:00 p.m.

Educational Session 13

NATE Authorized Climber Training Course

Thursday, February 14 • 8:00 a.m. - 5:00 p.m.

Management Track (Sessions 2-4-6-8-10-12)

Educational Session 2

Insurance 101/Strategies for Insurance Renewal

Tuesday, February 12 • 8:00 a.m. - 9:30 a.m.

Educational Session 4

Controlling Substance Abuse

Tuesday, February 12 • 9:45 a.m. - 10:45 a.m.

Educational Session 6

NATE/OSHA Partnership Review

Tuesday, February 12 • 11:00 a.m. - 12:00 p.m.

Educational Session 8

Making Safety Happen in a Tower Company

Wednesday, February 13 • 8:00 a.m. - 9:30 a.m.

Educational Session 10 - Guest Speaker/Special Session

Special Session with Guest Speaker Assistant Secretary of Labor for Occupational Safety & Health Edwin G. Foulke, Jr.

Wednesday, February 13 • 10:00 a.m. - 11:00 a.m.

Educational Session 12

The Role of the Company Safety Officer - Part 1 and Part 2

Thursday, February 14 • 8:00 a.m. - 12:00 p.m.

Educational Session Certificate of Participation

Individuals attending the NATE 2008 educational sessions will have the opportunity to receive a certificate of participation.

Dates/Location

February 11-14

Disney's Coronado Springs Resort
Orlando, Florida

Registration/Badge Pickup

NATE 2008 Registration/Badge Pickup will be located at the Central Registration Counter throughout the following days/dates/times:

Monday, February 11 • 10:00 a.m. - 7:00 p.m.

Tuesday, February 12 • 7:30 a.m. - 7:00 p.m.

Wednesday, February 13 • 7:30 a.m. - 7:00 p.m.

Thursday, February 14 • 7:30 a.m. - 10:30 a.m.

NEW EXPOSITION HOURS!

Exposition/Exhibit Hall Hours

The NATE 2008 Exposition will be located in Veracruz BC. Exhibit hall hours include:

Tuesday, February 12 • 5:00 p.m. - 7:00 p.m.

(Reception held in the exhibit hall)

Wednesday, February 13 • 11:00 a.m. - 7:00 p.m.

(Luncheon and reception held in the exhibit hall)

Voting Member Session

All NATE Voting Members are welcome and encouraged to attend the Voting Member Session on Tuesday, February 12 beginning at 1:00 p.m. There will be two separate Voting Member Sessions, including one for official business, and the other for open discussion that will be moderated by the NATE Executive Director. Both sessions are open to NATE Voting Members only. The voting credentials desk will be located directly outside the session meeting room. Please refer to the NATE 2008 Schedule-At-A-Glance for exact location.

Coffee Breaks, Luncheons and Receptions

All registered NATE 2008 attendees are welcome to attend the complimentary coffee breaks, luncheons and receptions. Days and dates are listed below; however, please refer to the NATE 2008 Schedule-At-A-Glance for exact times and locations.

Coffee Breaks

Tuesday, February 12

Wednesday, February 13

Thursday, February 14

Luncheons

Tuesday, February 12

Wednesday, February 13

Receptions

Monday, February 11

Tuesday, February 12

Wednesday, February 13



EVENT SPONSORS

Gold



There is still time to support NATE with your contribution.
 For more information on remaining NATE 2008 sponsorship opportunities, please contact NATE Operations Coordinator **Paula Nurnberg** via telephone at **888-882-5865 (U.S.)** or **605-882-5865** or **paula@natehome.com**.

Silver



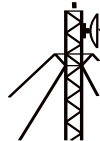
Bronze



Patron



SOUTHERN BROADCAST SERVICES



Tower Systems, Inc.

TWR Lighting, Inc.

Friends of NATE



Coffee Sponsor



Popcorn Sponsor



SCHEDULE-AT-A-GLANCE

SUBJECT TO CHANGE

Monday, February 11

7:30 a.m. - 5:30 p.m.	 Educational Session 1 <i>OSHA 10-Hour Training Course (Registered Class Participants Only)</i>	Yucatan 1-3
8:00 a.m. - 1:30 p.m.	Board of Directors Meeting <i>(Board Members Only)</i>	TBA
10:00 a.m. - 7:00 p.m.	Registration Open	Central Registration Counter
10:00 a.m. - 7:00 p.m.	Information Booth/Cyber Café	Laredo
2:00 p.m. - 4:30 p.m.	OSHA Relations Committee Meeting <i>(OSHA Relations Committee Members Only)</i>	Fiesta 1
2:00 p.m. - 4:30 p.m.	Safety & Education Committee Meeting <i>(Safety & Education Committee Members Only)</i>	Fiesta 2
2:00 p.m. - 4:30 p.m.	Trade Show Committee Meeting <i>(Trade Show Committee Members Only)</i>	Fiesta 3
2:00 p.m. - 4:30 p.m.	Membership Committee Meeting <i>(Membership Committee Members Only)</i>	Fiesta 4
5:00 p.m. - 7:00 p.m.	Welcome Reception	Fiesta 5

Tuesday, February 12




7:30 a.m. - 7:00 p.m.	Registration Open	Central Registration Counter
7:30 a.m. - 7:00 p.m.	Information Booth/Cyber Café	Laredo
7:00 a.m. - 3:00 p.m.	Exhibitor Move-in <i>(NATE 2008 Exhibitors Only)</i>	Veracruz BC
7:30 a.m. - 11:00 a.m.	Coffee Service	Fiesta 1-4 & 7-10
8:00 a.m. - 9:30 a.m.	 Educational Session 2 <i>Insurance 101/Strategies for Insurance Renewal</i>	Fiesta 7-10
8:00 a.m. - 9:30 a.m.	 Educational Session 3 <i>OSHA Revised Directive for Riding the Line During Construction and Maintenance Activities on Communication Structures</i>	Fiesta 1-4
9:45 a.m. - 10:45 a.m.	 Educational Session 4 <i>Controlling Substance Abuse</i>	Fiesta 7-10
9:45 a.m. - 10:45 a.m.	 Educational Session 5 <i>Mobile Crane Certification and Safety</i>	Fiesta 1-4
11:00 a.m. - 12:00 p.m.	 Educational Session 6 <i>NATE/OSHA Partnership Review</i>	Fiesta 7-10
11:00 a.m. - 12:00 p.m.	 Educational Session 7 <i>RF Safety at Work Sites</i>	Fiesta 1-4
12:00 p.m. - 1:00 p.m.	NATE Luncheon	Fiesta 5&6
1:00 p.m. - 4:00 p.m.	Voting Member Business Session/Open Forum <i>(NATE Voting Members Only)</i>	Yucatan 1-3
4:00 p.m. - 4:30 p.m.	Board of Directors Meeting <i>(Board Members Only)</i>	TBA
5:00 p.m.	Ribbon Cutting	Veracruz BC
5:00 p.m. - 7:00 p.m.	Exposition Open	Veracruz BC
5:00 p.m. - 7:00 p.m.	NATE Reception in Exhibit Hall	Veracruz BC



Wednesday, February 13

7:30 a.m. - 7:00 p.m.	Registration	Central Registration Counter
7:30 a.m. - 7:00 p.m.	Information Booth/Cyber Café	Laredo
7:30 a.m. - 9:45 a.m.	Coffee Service	Fiesta 1-4 & 7-10
8:00 a.m. - 9:30 a.m.	 Educational Session 8 <i>Making Safety Happen in a Tower Company</i>	Fiesta 7-10
8:00 a.m. - 9:30 a.m.	 Educational Session 9 <i>Installing an Effective Ground Electrode System</i>	Fiesta 1-4
10:00 a.m. - 11:00 a.m.	 Educational Session 10 <i>Special Session with Guest Speaker Assistant Secretary of Labor for Occupational Safety & Health Edwin G. Foulke, Jr.</i>	Fiesta 5
11:00 a.m. - 7:00 p.m.	Exposition Open	Veracruz BC
12:00 p.m. - 1:30 p.m.	NATE Luncheon in Exhibit Hall	Veracruz BC
4:00 p.m. - 4:30 p.m.	Board of Directors Meeting <i>(Board Members Only)</i>	TBA
5:00 p.m. - 7:00 p.m.	NATE Reception in Exhibit Hall <i>(with Sponsor Award Recognition)</i>	Veracruz BC
6:45 p.m.	Grand Prize Drawing	Veracruz BC
7:00 p.m. - 10:00 p.m.	Exhibit Dismantle and Move-out <i>(NATE 2008 Exhibitors Only)</i>	Veracruz BC

Thursday, February 14

7:30 a.m. - 10:30 a.m.	Registration	Central Registration Counter
7:30 a.m. - 10:30 a.m.	Information Booth/Cyber Café	Laredo
7:30 a.m. - 11:30 a.m.	Coffee Service	Fiesta 1-4 & 7-10
8:00 a.m. - 12:00 p.m.	Exhibit Dismantle and Move-out <i>(NATE 2008 Exhibitors Only)</i>	Veracruz BC
8:00 a.m. - 12:00 p.m.	 Educational Session 12 <i>The Role of the Company Safety Officer - Part 1 and Part 2</i>	Fiesta 5
8:00 a.m. - 3:00 p.m.	 Educational Session 11 <i>First Aid/CPR Course</i> <i>(Registered Class Participants Only)</i>	Fiesta 1-4
8:00 a.m. - 5:00 p.m.	 Educational Session 13 <i>NATE Authorized Climber Training Course</i> <i>(Registered Class Participants Only)</i>	Fiesta 7-10
9:00 a.m. - 10:00 a.m.	Board of Directors Meeting <i>(Board Members Only)</i>	TBA



All functions open to all attendees unless otherwise noted.

Visit the NATE website at www.natehome.com for the most current information.

EVENT NOTICES

Who Can Attend?

The NATE 2008 Conference & Exposition is open only to those companies and individuals who are involved with or interested in the broadcast and telecommunications tower erection, service and maintenance industry.

No Solicitation

Any activity of soliciting away existing employees of any company during NATE 2008 is strictly prohibited. Anyone who directly or indirectly engages in soliciting away existing employees during this event will be immediately removed from the event and not allowed to return. Additional consequences of such activities include prohibition from attending future NATE events and the possible revocation of NATE membership where applicable.

Solicitation of business by companies who are not NATE 2008 exhibitors is strictly prohibited in the exhibit hall.

Badges

Badges are required for admission to all NATE 2008 events. Badges are non-transferable.

Are Children Allowed?

No one under 18 years of age will be permitted access to any of the conference and exposition-related functions.

First Aid

A First Aid station will be located in the exhibit hall throughout exhibit set-up, exhibit hall hours and exhibit dismantle.

Publication Bins

Numerous industry-related publications will be participating at the NATE 2008 event by providing current issues of their magazines. The publication bins will be located near NATE Registration. All NATE 2008 registered attendees are welcome to obtain magazines at the publication bins.

Message Board

For the convenience of NATE 2008 attendees, a message board will be located at NATE Registration.

Awards Reception

Recognition of NATE 2008 event sponsors will take place at the reception in the exhibit hall on Wednesday evening. All NATE 2008 registered attendees are welcome to attend all receptions.



Photography/Audio/Video

Photography or audio/video recording by anyone other than those contracted by NATE is strictly prohibited.

NATE Information Booth/Cyber Café

The NATE Information Booth will include various NATE information, materials and printed items, complimentary Internet access, and will be located in the Laredo room next to NATE Registration throughout the following days/dates/times:

- Monday, February 11 • 10:00 a.m. - 7:00 p.m.
- Tuesday, February 12 • 7:30 a.m. - 7:00 p.m.
- Wednesday, February 13 • 7:30 a.m. - 7:00 p.m.
- Thursday, February 14 • 7:30 a.m. - 10:30 a.m.

Event Shirts and Tote Bags

NATE 2008 attendees will receive a tote bag and event materials upon registration/badge pick-up at NATE Registration in Orlando. Included with the event materials will be a card for a complimentary NATE 2008 shirt. This card may be exchanged for a shirt at the NATE Information Booth (while quantities last).

Conference Dress Attire

Both business and casual dress are suitable for the committee meetings, conference sessions, exposition, and networking events.

Exhibitor Set-up

Only those individuals representing NATE 2008 exhibiting companies who are directly involved with exhibit hall set-up will be allowed in the exhibit hall prior to the 5:00 p.m. ribbon cutting on Tuesday, February 12, or any other time not included in the exhibit hall hours listed.



EDUCATIONAL SESSIONS



Tower Hand Track

Educational Session 1 **OSHA 10-Hour Training Course**

Rob Medlock and Jocko Vermillion
U.S. DOL - OSHA

MUST REGISTER IN ADVANCE

Monday, February 11 • 7:30 a.m. - 5:30 p.m. • Yucatan 1-3



NATE Member companies that are NATE/OSHA Partners are required to provide all non-supervisory personnel engaged in construction activities with the *OSHA 10-Hour Training Course* or its equivalent within the first year of the agreement.

Any NATE Member who is registered for the NATE 2008 Conference & Exposition has the opportunity to register for the *OSHA 10-Hour Training Course*. The class size for this course is limited to 120 people, and is available on a first-come first-serve basis. There is no cost for this course.



If you would like to register for the OSHA 10-Hour Training Course or the NATE 2008 Conference & Exposition, please complete the

NATE 2008 online Registration Form, which can be found on the NATE Website at www.natehome.com. The deadline to register is Friday, January 11, 2008.

Further details relating to the course will be relayed to those registered after the registration deadline.

If you have specific questions regarding the course, please contact Jocko Vermillion at Tel: 216-615-4258.



Educational Session 3 **OSHA Revised Directive for Riding the Line During Construction and Maintenance Activities on Communication Structures**

Gordon Lyman
WesTower Communications

Tuesday, February 12 • 8:00 a.m. - 9:30 a.m. • Fiesta 1-4

Gordon Lyman is the Vice President of Safety and Quality Assurance for the WesTower Communications group of companies.

Gordon has over 35 years of experience in the communication tower industry. He started in the field installing all types of structures from small to large in North America and overseas. As he gained experience in the installation of small and tall towers he progressed from installation, through several phases of management, ownership, and onto safety where he has focused his efforts over the last 15 years.



In addition to his duties at WesTower, Gordon is Chairman of the NATE OSHA Relations Committee and also works with industry standard groups including OSHA, ASSE, ANSI, NATE and TIA on the development of new standards to improve the telecommunication tower industry.

Gordon's professional affiliations include the American Society Safety Engineers, and the National Safety Council. He also participates on the Fall Protection Committees for the CSA 259 in Canada and ANSI Z359 in the United States.

This is the third revision to the Directive and the purpose of the revision is to bring the Directive in line with the new Gin Pole Standard and the revised Hoist Standard.

The revised Directive will be reviewed in detail to ensure the user's complete understanding of the rules and compliance.

EDUCATIONAL SESSIONS



Tower Hand Track

Educational Session 5 Mobile Crane Certification and Safety

Tony Dotto

Crane Technical Training & Inspection, Inc.

Tuesday, February 12
9:45 a.m. - 10:45 a.m. • Fiesta 1-4



Tony Dotto is the Director of Technical Services for Crane Technical Training & Inspection, Inc. (Crane Tech) of Tampa, Florida. Prior to joining Crane Tech, Tony applied 23 years of equipment experience to design and deliver a wide range of material handling services. He also served as Senior Training Director for Canadian National Railway's heavy equipment division, while earning his Hoisting Engineers license.

Tony is an OSHA-recognized instructor, an equipment inspector, and has provided presentations at conventions, symposiums and joint management/union safety meetings for many years. He is a regular guest lecturer for Georgia Tech's OSHA Outreach programs, and many of his writings are published each year in trade and industry periodicals.

Educational Session 7 RF Safety at Work Sites

Richard Strickland

RF Safety Solutions

Tuesday, February 12
11:00 a.m. - 12:00 p.m. • Fiesta 1-4



Richard Strickland founded RF Safety Solutions in 2001 after ten years as Director of Business Development for Narda Safety Test Solutions. At Narda, Richard determined which products were developed and their performance characteristics and frequently functioned as program manager, as he did with the Nardalert XT RF personal monitor. Richard has taught more than one hundred fifty public and private seminars on RF radiation safety. Current training customers include NBC, ABC, ESPN, and the Society of Broadcast Engineers.

This presentation provides practical, easy-to-follow advice on RF safety for tower hands. There is very little theory but there are plenty of pictures, diagrams, and guidelines. Simplified diagrams of antenna patterns help to show the best approach routes and safe distances from various antennas. Photos of various antennas and sites are used as examples. RF personal monitors and RF garments -- options, performance, and proper use -- are also covered.

Mobile Crane Operator certification is becoming mandatory by Federal OSHA and is a requirement in 14 states. Participants will be updated with the latest news on OSHA's new ruling and the CCO national certification program. Mobile Crane Safety topics on crane inspections, crane set-up, electronic weighing devices and who is operating cranes on your job sites will be addressed. Don't miss it!

Educational Session 9 Installing an Effective Ground Electrode System

Mark Harger

Harger Lightning & Grounding

Mike Lewis

Megger

Wednesday, February 13
8:00 a.m. - 9:30 a.m. • Fiesta 1-4

Mark Harger is the President of Harger Lightning & Grounding located in Grayslake, Illinois and received a degree from Iowa State University in 1978. He chairs the BICSI Grounding and Bonding Committee, which is soon to release a new Grounding and Bonding standard. Mark also serves on the TIA Engineering Committee TR-42.3 and has recently been appointed as Committee Chair responsible for rewriting ANSI-J-STD-607-A, Commercial Building Grounding (Earthing) and Bonding Requirements for Telecommunications. He also serves on the Board of Directors of the Lightning Protection Institute, and is an alternate to Thomas R. Harger on the NFPA 780 Standard for Lightning Protection Committee. In addition, Mark also serves on the IEEE Tag 81, which is involved with the IEC Standard for Lightning Protection.

Mike Lewis, Senior Applications Engineer, has been with Megger for the past 6 1/2 years. His duties at Megger include product training, customer demonstrations and training, rep and distributor training, sales, and trade shows. Prior to joining Megger, Mike retired after 30 years with SBC (Southwestern Bell Corp.). During his 30 years at SBC, Mike worked in the Outside Plant environment as both a craftsman and manager over OSP field crews. After retiring from SBC and before joining Megger, Mike worked for 2 years with AT&T Broadband (now ComCast) where he set up the training for installation forces related to the CATV deployment of digital phone services.

The *Installing an Effective Ground Electrode System* session will review proper soil resistivity techniques, ground electrode system components, proper installation, and measuring the effectiveness of the ground electrode system by means of ground testing.

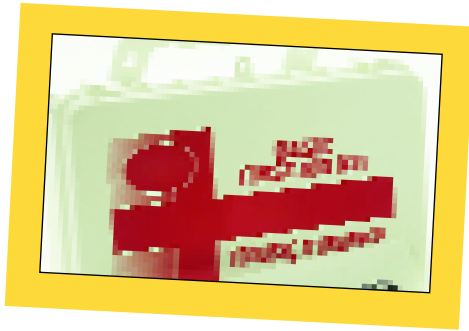


Educational Session 11 First Aid/CPR Course

American Red Cross of Central Florida

Thursday, February 14
8:00 a.m. - 3:00 p.m. • Fiesta 1-4

The *First Aid/CPR Course* will cover a wide range of topics



including how to respond to sudden illnesses and injuries, breathing and cardiac emergencies in adults, use of an Automated External Defibrillator (AED), First Aid, stroke recognition, how to care for an uncon-

scious choking victim, basics of CPR, and how to respond to various other medical emergencies. Participants who successfully complete this course will receive a First Aid/CPR certification card.

Any NATE Member who is registered for the NATE 2008 Conference & Exposition has the opportunity to register for the *First Aid/CPR Course*. The class size for this course is limited to 60 people, and is available on a first-come first-serve basis. Cost for the course is \$110.00 per person. Lunch will be provided for this course.

If you would like to register for the *First Aid/CPR Course* or the NATE 2008 Conference & Exposition, please complete the NATE 2008 Registration Form, which can be found on the NATE Website at www.natehome.com. The deadline to register is Friday, January 11, 2008.

Further details relating to the course will be relayed to those registered after the registration deadline.



Educational Session 13 NATE Authorized Climber Training Course

Winton Wilcox
ComTrain LLC

Thursday, February 14
8:00 a.m. - 5:00 p.m. • Fiesta 7-10

In pursuit of NATE's mission to "facilitate training for member companies", NATE will be offering a one-day tower climber training course, designed to train climbers to the Authorized Climber Standard of the NATE Tower Climber Fall Protection Training Standard.

The *NATE Authorized Climber Training Course* will be presented by ComTrain LLC, a NATE member company specializing in tower climber training.

Participants are required to bring their own harnesses for this course.

Any NATE Member who is registered for the NATE 2008 Conference & Exposition has the opportunity to register for the *NATE Authorized Climber Training Course*. The class size for this course is limited to 50 people, and is available on a first-come first-serve basis. Cost for the course is \$210.00 per person. Lunch will be provided for this course.

If you would like to register for the *NATE Authorized Climber Training Course* or the NATE 2008 Conference & Exposition, please complete the NATE 2008 Registration Form, which can be found on the NATE Website at www.natehome.com. The deadline to register is Friday, January 11, 2008.

Further details relating to the course will be relayed to those registered after the registration deadline.



Important Things to Note

Cyber Café

All registered NATE 2008 attendees are welcome to utilize the complimentary cyber café, which will be located in the NATE Information Booth and will be open the same hours as registration. Use one of two computers that will be provided, or bring your own laptop and use the complimentary wireless Internet service that will be available in this room to all registered attendees.

Online Hotel Reservations

Hotel reservations can be made online at <http://www.disneyurl.com/NATE2008>. Subject to availability, rooms may be reserved at Group Rate for the five days before February 9, 2008 and the five days after February 14, 2008.

Online Park Discounts

Special tickets and savings are available only for NATE attendees and their guests at www.disneyconventionear.com/nate.

Disney's Complimentary Shuttle

Guests staying at Disney's Coronado Springs Resort enjoy complimentary bus service to and from the following attractions: Disney's Magic Kingdom, Disney-MGM Studios, Epcot, Disney's Animal Kingdom, and Downtown Disney. Downtown Disney offers many dining and entertainment options and is open late. This complimentary service can be found near the hotel lobby as well as several additional bus stops located on the hotel property. There is no need to spend money on cab fare to go off property for dinner.

EDUCATIONAL SESSIONS



Management Track



Educational Session 2 **Insurance 101/Strategies for Insurance Renewal**

Mark Grennan
Grennan & Associates

Tuesday, February 12
8:00 a.m. - 9:30 a.m. • Fiesta 7-10

Mark Grennan has been providing independent property and casualty Risk Management and Insurance Consulting since 1989. He is President of Grennan & Associates, Inc. (G & A) an independent Risk Management and Consulting company. G & A provides consulting services to many different industries that include retail and wholesale sales, manufacturing, construction, tower erection and maintenance, government, energy, and many more. Mark specializes in property and casualty insurance consulting with an emphasis on contract review regarding insurance and indemnification clauses.

Insurance 101 will consist of an open discussion regarding property and casualty insurance. Attendees are encouraged to ask questions so they can get an unbiased answer from an independent risk management and insurance consultant.

Strategies for Insurance Renewal will include tips and strategies on achieving the best property and casualty insurance program at the most economical price.



Educational Session 6 **NATE/OSHA Partnership Review**

Rob Medlock
U.S. DOL - OSHA

Gordon Lyman
WesTower Communications

Tuesday, February 12
11:00 a.m. - 12:00 p.m. • Fiesta 7-10

On November 8, 2006 NATE and OSHA signed a landmark agreement creating the NATE/OSHA National Partnership. The program was developed to improve industry safety and health through establishing requisite levels of training, the implementation of safety programs, and the routine use of site safety audits. OSHA in turn agreed to focused inspections, training for its compliance officers, and applying special con-

Educational Session 4 **Controlling Substance Abuse**

Mark A. Lies, II
Seyfarth Shaw

Tuesday, February 12
9:45 a.m. - 10:45 a.m. • Fiesta 7-10



Mark A. Lies, II is a labor and employment attorney and partner with the law firm of Seyfarth Shaw, located in Chicago, Illinois. Mark specializes in occupational safety and health law, as well as related employment law and accident litigation. He represents management in defense of OSHA enforcement actions and in responding to OSHA inspections, and he practices on a nationwide basis. Mark is a graduate of the University of Notre Dame (1968) and DePaul University Law School (1974). He is a Vietnam veteran with the U.S. Navy.

Along with providing legal counsel for the National Association of Tower Erectors and its members, Mark submits monthly articles for *Tower Times* magazine addressing a variety of legal issues affecting NATE Member companies.

The *Controlling Substance Abuse* session will provide an overview of federal and state laws regarding an employer's legal responsibilities and liabilities associated with creating and administering a substance control program for controlling drug and alcohol use and impairment by employees at the worksite. It will also provide practical information on how to comply with these legal obligations without violating employee rights under the Americans with Disabilities Act and other right to privacy laws. It will also provide guidance on enforcement of these programs, including employee discipline for violations.

sideration to Partnering companies as applicable.

Along with these provisions, the Partnership has resulted in further improved communications with OSHA and expanding NATE and OSHA's ongoing working relationship within the highest levels of the agency.

The *NATE/OSHA Partnership Review* will examine the first year of the program and report on expectations for the future. Partnership participation requirements will be reviewed for companies considering joining the program, and insights into the value of the program for members will also be offered.



Educational Session 8 Making Safety Happen in a Tower Company

Donald M. Espach and P. Francis Hartnett
Andrew Systems, Inc.

Wednesday, February 13
8:00 a.m. - 9:30 a.m. • Fiesta 7-10



Donald M. Espach has over 30 years experience developing and implementing cost-effective solutions to occupational safety and health problems. He is a Certified Safety Professional and holds a masters degree in Management Engineering. He is retired as a Certified Industrial Hygienist (1982-2000).

Don has improved safety performance in dozens of organizations, large and small, both in and out of the tower industry. He is currently the Manager of Safety and Health at Andrew Systems, Inc. Formerly, he was the Director of Safety at American Tower and at GTE, a \$20 billion Fortune 50 corporation with over 150,000 employees at 120 manufacturing plants and 7 telephone operating companies. Don's career also includes 6 years running his own safety consulting practice serving a wide range of companies in a wide range of industries.



P. Francis Hartnett has over 25 years of experience in municipal Fire Fighting, Rescue and Emergency Response. He has been an instructor since 1986 and has trained state and volunteer fire fighters on numerous topics including Basic Fire Fighting, Fire Survival, and High Angle and Confined Space rescues. In 1990 Francis was honored with

the privilege of conducting Fire Safety Training at the White House to George H. Bush and White House executive and administrative staff.

Francis has been in the tower industry since 2000 with Specialty Constructors, American Tower and Andrew Systems. Over that time he has been a driving force in changing safety attitudes among tower workers. His dynamic interactions with management and field personnel have led to increased interest and passion for individual and crew safety. Francis has been instrumental in developing Qualified Climber, tower-specific OSHA 10-Hour and Tower Rescue programs.

Oftentimes there is a gap between what is said about safety and what is done. Why are some companies more effective than others in preventing accidents? What do the effective companies do that the ineffective ones do not? This presentation will provide the answers to these questions and provide practical tools you can use to make safety happen in your company.

Educational Session 10 Special Session with Guest Speaker Assistant Secretary of Labor for Occupational Safety & Health Edwin G. Foulke, Jr.

Edwin G. Foulke, Jr.
*Assistant Secretary of Labor for
Occupational Safety & Health*

Wednesday, February 13
10:00 a.m. - 11:00 a.m. • Fiesta 5



Mr. Edwin G. Foulke, Jr., Assistant Secretary of Labor for Occupational Safety & Health, will address NATE Members at 10:00 a.m. on Wednesday, February 13 in conjunction with the NATE 2008 Conference & Exposition.

As Assistant Secretary of Labor for Occupational Safety and Health, Edwin G. Foulke, Jr., heads the Occupational Safety and Health Administration (OSHA) and its staff of more than 2,200 safety and health professionals and support personnel.

Named by President George W. Bush to head OSHA on Sept. 15, 2005, Foulke was confirmed by the Senate on March 15, 2006, and sworn in as the head of the agency on April 3, 2006.

Prior to his nomination, Foulke was a partner with the law firm of Jackson Lewis, LLP in Greenville, S.C., and Washington, D.C., where he chaired the firm's OSHA practice group. His practice areas included all topics of labor relations, specializing in occupational safety and health issues, workplace violence risk assessment and prevention, and accident and fatality prevention.

From 1990 to 1995, Foulke served on the Occupational Safety and Health Review Commission, chairing the commission from March 1990 to February 1994. The three-member commission is an independent federal adjudicatory agency that renders decisions involving workplace safety and health citations arising from OSHA inspections.

Foulke served on the Workplace Health and Safety Committee for the Society for Human Resource Management from 2000 to 2004, including a two-year term as the committee's chair. He was also a member of the Health and Safety Subcommittee for the U.S. Chamber of Commerce. Foulke has authored articles on workplace safety and health for various entities, including the South Carolina Chamber of Commerce, American Bar Association, the South Carolina Bar Association, and the North Carolina Citizens for Business and Industry.

Foulke, a native of Perkasio, PA, graduated from North Carolina State University (with honors) in 1974. He earned his law degree from Loyola University in 1978, and a Master of Law degree from Georgetown University Law School in 1993. He also served as an adjunct professor at New Orleans' St. Mary's Dominican College.

He is admitted to practice in Georgia, South Carolina, North Carolina and the District of Columbia, and is admitted in the Fourth, Eleventh, and D.C. Federal Circuit Courts of Appeals, as well as the U.S. Supreme Court. He is married to Wendy Smith Foulke from Hampton, S.C.

OSHA's role is to assure the safety and health of America's employees by setting and enforcing standards; providing training, outreach, and education; establishing partnerships; and encouraging continual improvement in workplace safety and health.

EDUCATIONAL SESSIONS



Management Track

Educational Session 12 **The Role of the Company Safety Officer - Part 1 and Part 2**

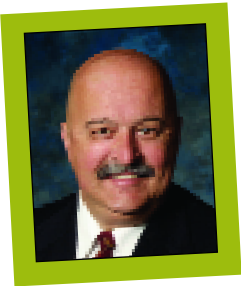
Steve Wilder

Communications Industry Training and Certification Academy (CITCA)

Jocko Vermillion

U.S. DOL - OSHA

Thursday, February 14
8:00 a.m. - 12:00 p.m. • Fiesta 5



Steve Wilder is Vice President of Training and Development for CITCA, the Communications Industry Training and Certification Academy in Bradley, IL. Steve has been involved in safety management for over twenty years and has worked with client companies across the United States. In addition, he has worked with insurance companies and law firms in accident investigations and legal analysis. Steve is a member of the NATE Safety & Education Committee.



Jocko Vermillion is the National Tower Expert with U.S. DOL - OSHA, stationed out of the Cleveland Area Office. His duties involve teaching both OSHA compliance officers and tower climbers on tower safety rules and regulations. Jocko is available to both the private tower industry and OSHA compliance officers to answer questions relating to tower safety rules and regulations. Prior to joining OSHA, Jocko was the past Vice President of Summit Tower Services, Inc. He also formerly served on the NATE OSHA Relations Committee.

Part 1 of this two-part program looks at the role of the company safety officer, and how that person contributes to the company's safety and health program. The program includes OSHA standards affecting the tower erection industry, how to use the OSHA standards manual, and how to apply OSHA standards.

Part 2 is a continuation of Part 1 and continues into methods of achieving compliance with OSHA standards, elements of a successful Employee Health and Safety Program, and implementation of the Health and Safety Program, and ways to use the Health and Safety Program as a money saving tool for your company.

EXPOSITION

The NATE 2008 Exposition will be held in Veracruz BC at Disney's Coronado Springs Resort in Orlando, Florida. The exposition will showcase new products, services and technology from leading manufacturers, suppliers and service providers in the broadcast and telecommunications tower erection, service and maintenance industry.

Exhibit Hall Receptions/ Luncheon/Beverages

All registered NATE 2008 attendees are welcome to attend the complimentary receptions and luncheon in the exhibit hall on Tuesday, February 12 and Wednesday, February 13. Beverages will be available for purchase in the exhibit hall throughout the exhibit hall hours.

Event Surveys

Attendee and exhibitor comments are important to the continued success of future NATE events. The NATE Administrative Staff and Trade Show Committee review all surveys. Attendee surveys are included in each registration packet, and exhibitor surveys are distributed during exhibit hall hours to all exhibitors.

Grand Prize

Win a trip to NATE 2009 in Nashville, Tennessee!

All NATE 2008 attendees will receive one free drawing ticket with their registration materials. The Grand Prize drawing will be held in the exhibit hall on Wednesday, February 13 at 6:45 p.m. The Grand Prize drawing is for registered NATE 2008 attendees only and the winner must be present in the exhibit area at the time of the drawing to win.

The NATE 2008 Grand Prize includes a round trip for two to the NATE 2009 Conference & Exposition to be held February 23-26 in Nashville, Tennessee.



CONFERENCE & EXPOSITION MAP

Disney's Coronado Springs Resort



Please note: The Tuesday and Wednesday evening receptions will be held in the Exhibit Hall (*Veracruz BC*) from 5:00 p.m. to 7:00 p.m. The Wednesday Luncheon will also be held in the Exhibit Hall from 12:00 p.m. to 1:30 p.m.



Disney

EXHIBIT HALL MAP

Veracruz
Ballroom BC

FOOD & BEVERAGE

Exhibit Plus Presentations

Wednesday, February 13

1:00 p.m.

Speed and Efficiency of Tower Design Using Software from RISA Technologies

Presented by:
RISA Technologies

3:00 p.m.

Vibration Dampening, Bird Flight Diverters, and Unique Termination for Guyed Towers

Presented by:
Preformed Line Products

Exhibit Plus Presentations will be located in the Exhibit Hall - please see exhibit hall map for exact location.



Sponsors/Exhibitors
 Exhibitors
 Available Exhibit Space
 Exhibit Plus Presentations

LAST REVISED 10/10/07
SUBJECT TO CHANGE



EXHIBITORS

COMPANY	BOOTH NUMBER
AGL Magazine	219
AIG/Arthur J. Gallagher Risk Management Services, Inc.	200
Alliance Corporation	501
ALT Fabrication	606
Altec	607
Aluma-Form Inc.	425
AMERISAFE, Inc.	705
Andrew Corporation	507
Antenna Products	626
Buckingham Mfg.	206
Carmanah Technologies Corp.	531
Cellxion, LLC	618
CHANCE (Hubbell Power Systems)	309
CITCA	528
ComTrain LLC	723
Crane Tech	430
DBI/SALA and Protecta	400
Dialight Corporation	535
Dillon Force Measurement	530
Electro Mechanical Industries, Inc.	700
Elk River, Inc.	306
ERI	619
ERICO	720
Euclid Garment Mfg Co	210
Eupen Cable	625
FarLight LLC	334
Flash Technology	324
Florida Industrial Electric	209
FWT Inc.	429
H & H Industries Inc.	702
Harger Lightning & Grounding	512
Hiab, Inc. A Cargotec Company	222
Honeywell	308
Houston Structures	303
Hutton Communications, Inc.	519
Hydradyne Hydraulics LLC	410

COMPANY	BOOTH NUMBER
ITL, LLC	434
Lindapter North America, Inc.	534
Maximum Capacity Media/Crane Hot Line	218
Megger	529
Miller Fall Protection	315
Narda Safety Test Solutions	212
National Strand Products	327
NELLO CORPORATION	719
Novatec Braids Ltd.	435
PCIA - The Wireless Infrastructure Association	214
PennSummit Tubular LLC	318
Phillystran, Inc.	428
Pigeon Mountain Industries, Inc.	635
Preformed Line Products	424
Primus Electronics	612
Radio Frequency Systems	525
RISA Technologies	207
Rohn Products, Div. of Radian Communication Services	413
Rosenberger Leoni Site Solutions	204
RSI	722
Sabre Towers & Poles	401
Site Pro 1 Inc.	312
Specialty Tower Lighting, Ltd.	629
Talley Communications Corp.	201
Tech Products, Inc.	533
Tennessee Equipment Supply Inc.	301
TESSCO Technologies	407
Times Microwave Systems	426
Tower Innovations	701
Trylon TSF	601
TUF-TUG Products	524
TWR Lighting, Inc.	513
UNIMAR, INC.	325
Valmont Structures	628
Weisman Consultants Inc.	527
World Tower Co., Inc.	526
WSI Lighting	624

LAST REVISED 10/10/07 • SUBJECT TO CHANGE

EXHIBITOR PROFILE

- Anchor Testing Equipment
- Anchoring Systems
- Antennas, Antenna Mounts & Accessories
- Anti Two Block Systems
- Automation
- Beacons
- Bolts
- Boom Trucks
- Cable and Accessories
- Capstans
- Coaxial Communications
- Communication Shelters
- Computer Hardware
- Computer Software
- Concrete Forming
- Connectors
- Consulting Services
- Cranes
- Disaster Support Systems
- EMF Test and Measurement Products
- Engineering Services
- Equipment Shelters
- Fall Arrest and Fall Protection
- Fasteners
- Forklifts
- Foundations
- Gin Poles
- Grounding
- Hoists
- Identification Tagging Systems
- Instrumentation
- Insurance
- Lighting
- Lightning Protection
- Measurement Devices
- Microwave Dehydrators
- Monopoles
- Networks
- On-Site Communications
- Package/Delivery Services
- Payroll Services
- Radio-Mobile, Cellular, SMR, Paging
- Rescue Training
- RF Consulting, Garments, Monitoring
- Devices
- Rigging
- Roosterheads
- Rope
- Safety Equipment
- Security
- Site Management
- Slings
- Strobes
- Test Equipment
- Tools
- Tower Accessories
- Towers - Guyed and Self-Support
- Training - Safety and Rescue
- Waveguide Dehydrators
- Waveguide Support Products
- Winches

REGISTRATION & BADGE INFORMATION



NATE 2008 Registration for all NATE Members, Non-members, and/or Exhibitors/Sponsors is offered ONLINE ONLY.

To access the online registration system, please go to **www.natehome.com** and click on the NATE 2008 Registration button. If you are a NATE Member who is also a NATE 2008 Exhibitor and/or Sponsor, please use your **NATE Membership ID Code** for registration. Non-member Exhibitors and/or Sponsors please refer to the access code assigned to your company.

NATE Members please use your **NATE Membership ID Code** for registration, which will ensure you will receive the Member Registration rate. Member registration rates are available to all current NATE Members and employees of NATE Member companies.

The Primary Contact for each NATE Member company should have their **NATE Membership ID Code** on file.

Non-member registration rates are available to non-members who are involved with or interested in the telecommunications tower construction, service and maintenance industry.

Advance Registration

To be eligible for the advance registration rates, registrations must be received through the online registration system no later than the close of business on **Friday, January 11, 2008**. After this date, all registrations must be handled in Orlando. Payment may be made via MasterCard, Visa, or American Express.

Registration Confirmation

You will receive an email confirmation once you have completed the online registration form and payment.

On-Site Registration

On-site registration will be available throughout the dates and times listed under Registration Location/Badge Pickup Hours. Payment may be made via MasterCard, Visa, American Express, cash, money order, or company check. (Payable in U.S. dollars and drawn on a U.S. bank).



IMPORTANT!
PLEASE READ ALL
REGISTRATION INFORMATION
AS THE PROCESS
HAS CHANGED!



Conference Registrations Include

All NATE 2008 registrations/badges are full conference, which include admission to educational sessions*, coffee breaks, luncheons, receptions and exhibit hall.

NATE Voting Members are allowed access into the Voting Member Business Session/Open Forum on Tuesday February 12, 2008. NATE non-voting members and non-members are not allowed access into the Voting Session.

**Does not include "registered class participants only" designated sessions.*

Badge Substitution/Cancellation

Registration fees are non-refundable.

Substitutions within the same company are free of charge; however, ALL substitutions must be handled on-site in Orlando.

Registration Location/ Badge Pickup Hours

Badges will not be distributed prior to the NATE 2008 event. All badges, including advance registrations, will be available at NATE Registration in Orlando throughout the following registration/badge pickup times/dates:

Monday, February 11: 10:00 a.m. - 7:00 p.m.
Tuesday, February 12: 7:30 a.m. - 7:00 p.m.
Wednesday, February 13: 7:30 a.m. - 7:00 p.m.
Thursday, February 14: 7:30 a.m. - 10:30 a.m.



HEADQUARTERS

Disney's Coronado Springs Resort

1000 West Buena Vista Drive
 Lake Buena Vista, FL 32830
 Tel: 407-939-1020
www.disneyworld.com

Disney's Coronado Springs Resort in Orlando, Florida will be the center of activity for the NATE 2008 Conference & Exposition.

Disney's Coronado Springs Resort is one of the largest single-level resort hotel convention centers on the East coast, which includes four theme parks, two water parks and five golf courses.

Location

Located in the heart of Walt Disney World®, this distinctive convention hotel is conveniently located near Epcot®, the Disney-MGM Studios, Disney's Animal Kingdom® Theme Park and the Magic Kingdom® Park.

In relation to the Coronado Springs Resort, Orlando International Airport is a 35-minute drive.



Accommodations/Guest Services

- High speed Internet access
- Free parking
- Bar/lounge
- Pool
- In-room safe
- Television with cable
- Laundry facilities/services
- Gift shops
- Babysitting/child services
- Health club
- Coffee maker in room
- Refrigerator
- Iron/ironing board
- Hairdryer
- Express checkout
- Barber/beauty shop
- ATM

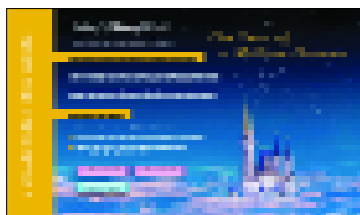


Resort Recreation

- La Vida Health Club: Work out on state-of-the-art exercise equipment, or schedule a rejuvenating massage;
- Mayan-themed heated feature pool with Jacuzzi plus three courtyard pools;



Special tickets and savings available only for NATE attendees and their guests:



www.disneyconventionear.com/nate

- Marina offering watercraft rental and fishing excursions;
- Jogging/walking trail around Lago Dorado;
- Access to five Disney championship golf courses; and
- Bicycle rentals and volleyball courts.

HEADQUARTERS

Reservations/Room Rates

Hotel reservations can be made online at <http://www.disneyurl.com/NATE2008> or by calling Disney's Coronado Springs Resort reservation department at **407-939-1020**. In doing so, please refer to the rates listed below and **request the group rate for NATE or National Association of Tower Erectors**. Hotel reservations are due by **Friday, January 11, 2008**. Once the NATE room block has been filled, **which could occur prior to January 11, 2008**, the hotel will not guarantee availability.

Subject to availability, rooms may be reserved at the Group Rate for the five days before February 9, 2008 and the five days after February 14, 2008.

The following room rates have been confirmed for the NATE 2008 Conference & Exposition:

Standard Room

Single or Double Occupancy: **\$143.00**

\$15.00 for each additional person

Check in: 3:00 p.m. • Check out: 11:00 a.m.

Dining in the Coronado Springs Resort

Maya Grill - Full-service breakfast and dinner featuring wood-grilled steaks and seafood with a Latin flair.

NEWLY EXPANDED! Rix (formerly Francisco's Lounge) - Cocktails, wine, beer and light snacks.

NEW! Laguna Bar - Margarita bar by the lake.

The Pepper Market - A lively marketplace atmosphere with various food stations open for breakfast, lunch and dinner.



Disney

Parking at the Coronado Springs Resort

Guests staying at Disney's Coronado Springs Resort enjoy free parking (does not include valet) during their stay.



Orlando/Orange County CVB

Area Attractions Near the Coronado Springs Resort

Guests staying at Disney's Coronado Springs Resort enjoy complimentary bus service to and from the following attractions:

Disney's Magic Kingdom -

Step into a world of fantasy filled with seven lands of timeless adventures.

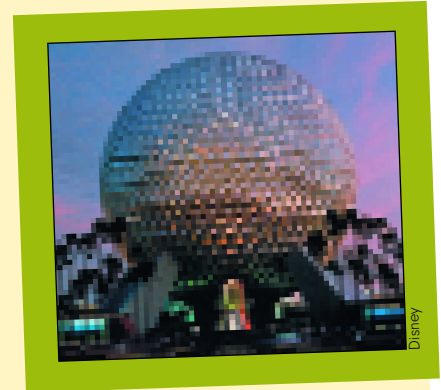
Disney-MGM Studios - Experience Hollywood thrills and spectacular entertainment where showbiz is at its best.

Epcot - Prepare for launch aboard a new, thrilling ride into space. Then sample cultures from around the globe and watch the night erupt with a spectacular fireworks finale.

Disney's Animal Kingdom - Set off on an adventure that includes an authentic African safari, live Broadway-style shows, exciting dinosaur attractions and Disney characters.

Downtown Disney/Pleasure Island - Enjoy a six-acre night-time entertainment complex that offers shopping, dining and themed nightclubs.

House of Blues® - Enjoy world-famous performers, live and in person, as well as the best up-and-coming talent from around the region.



Disney

Special tickets and savings available only for NATE attendees and their guests:



Disney

www.disneyconventionear.com/nate



Orlando/Orange County CVB

Orlando Weather in February

Average High: 74°
Average Low: 51°

GROUND TRANSPORTATION



Disney's Magical Express Service

This exclusive complimentary shuttle and luggage delivery service conveniently takes you from the airport directly to Coronado Springs Resort. It's the hassle free benefit that allows you to arrive at your meeting or event relaxed and stress-free. Booking Disney's Magical Express service is easy and convenient.

- After receiving your guest room confirmation number, call **407-827-6777** to book your Disney's Magical Express reservation or use the online group reservation request form <https://secure.disney.go.com/dwm/dma/dmeform>
- Prior to arrival, you will be mailed an Airport Transportation Booklet containing general information and special luggage tags which you will attach to your luggage before departure.
- Upon arrival at Orlando International Airport, you will be greeted by a Disney representative who will direct you to the Disney Airport Welcome Center in Terminal B.
- Enjoy complimentary motor coach transportation to the Coronado Springs Resort while your luggage goes straight from the plane to your room.
- Check-in at the Coronado Springs Resort, and your luggage will be delivered to your room.
- At the end of your stay, you will enjoy the same convenience of Disney's Magical Express service from the Coronado Springs Resort to Orlando International Airport.

Please note: You cannot book Disney's Magical Express Service upon arrival at the airport. Reservations must be made approximately 30 days before arrival.

Guests staying at Disney's Coronado Springs Resort enjoy complimentary bus service to and from Disney attractions.



Taxis and Shuttles

There are both taxis and shuttles available 24 hours a day in the baggage claim area of the airport. The cost of taxi transportation from the airport to anywhere in Orlando is \$3.50 for the first mile and \$2.00 for each additional mile.

Mears Airport Shuttle is available from Orlando International Airport to Coronado Springs Resort. Shuttle tickets may be purchased at the time of boarding. For return to the airport, the shuttle boards at the entrance of every Walt Disney World® Resort hotel. Make reservations 24 hours in advance and allow a minimum of two hours before flight time. Call 407-423-5566.

Public Transportation

Travel within the Orlando area is made convenient by riding on their efficient and friendly public transportation options:

Lynx Bus System - Public transportation service to most theme parks and tourist destinations in the service area. Cost: \$1.50 per person.

I-Ride Trolley Service - A fun way to get around International Drive. Cost: \$1.00 per person.



Car Rental

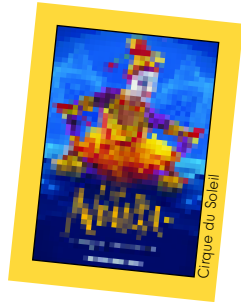
Avis Rent A Car: 407-825-3700
Enterprise: 321-436-9620

Dollar: 407-583-8000
Hertz: 407-859-8400

SIGHTS AND ATTRACTIONS IN ORLANDO

In a region where theme parks dominate the vacation experience, visitors find an unexpected Orlando® abound with surprisingly diverse cultural and natural attractions.

Cirque du Soleil - Enjoy a stunning mix of physical daring, breathtaking acrobatics, live music and awesome choreography.



Orlando Museum of Art - Explore the permanent collections of American art, African art and art of the ancient Americas, as well as rare touring exhibitions.

SeaWorld Orlando - The world's premier marine adventure park with 200 acres of world-class shows, thrilling rides and unforgettable animal encounters.



Universal Studios - A movie and TV-based theme park.

Universal CityWalk® - Enjoy shopping, dining and nightlife, including Bonkerz Comedy Club at CityJazz.

Improv Comedy Club and Restaurant - A premier nightclub and restaurant providing stand-up comedians.

Medieval Times Dinner & Tournament - Enjoy a medieval banquet while six knights compete astride Andalusian stallions.



For additional tourism information, you may wish to visit the Orlando Convention and Visitors Bureau website at:

www.orlandoinfo.com



"To Do" Checklist

The following checklist will assist you in preparing for the 13th Annual NATE Conference & Exposition.

- Did you register for NATE 2008 online at: www.natehome.com before January 11, 2008?
- Remember you will save \$100.00 per person by registering in advance.
- Did you review the NATE 2008 Schedule-At-A-Glance (see pages 4-5)?



- Did you make your travel arrangements for NATE 2008?
- Did you make your hotel arrangements for NATE 2008 (see pages 16-18)?

National Association of Tower Erectors

8 Second Street SE
Washington, DC 20003-5524



NATE
2008 February 18-19
Safety First. Safety Always. **CALL NOW!**

tel. 202-887-6868
Toll Free: 800-882-6868 (U.S.)
Fax: 606-896 3184
Website: www.nateonline.com
E-mail: nate@nateonline.com